

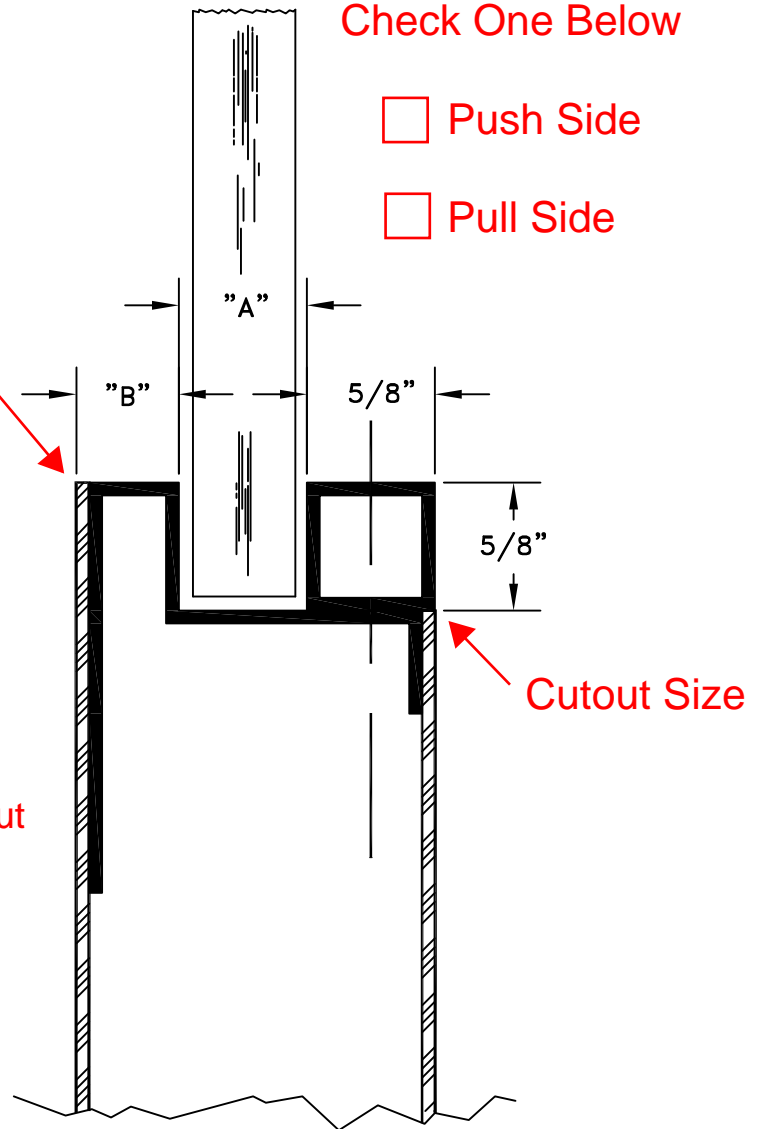
Screw Side
Check One Below

Push Side

Pull Side

Exposed Glass Size

1 3/4" Thick Doors		
Glass Thickness	Dim A	Dim B
1/2"	5/8"	1/2"
5/8"	3/4"	3/8"
2" Thick Doors		
1/2"	5/8"	3/4"

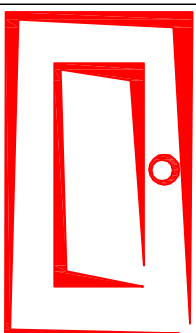


Labeled Doors:

- Minimum 5 3/4" Top & Vertical Rails to Cutout
- Minimum 6" Bottom Rail to Cutout

CUT GLASS = DOOR CUT-OUT LESS 1/4"
 CUT GLASS = EXPOSED GLASS LESS 1"
 EXPOSED GLASS = DOOR CUT-OUT LESS 1 1/4"

NOTE: GLAZING BY OTHERS



<p>Karpen Steel Custom Doors & Frames</p> <p>181 Reems Creek Rd Weaverville NC 28787 www.karpensteel.com</p> <p>Tel: 828-645-4821 Fax: 800-851-2131</p> <p>Drawn/Revised by: D Smith</p>	<p>Title:</p>
	<p>Description: FLUSH MOULDING KIT 1/2" or 5/8" Glass with 5/8 X 5/8 Tube</p>
	<p>File name: CUDV0012</p>
	<p>Rev. Date: 11JULY08</p> <p>Revision</p>